



Green Retreats

Proud to have worked with



01296 325777
hello@greenretreats.co.uk
greenretreats.co.uk

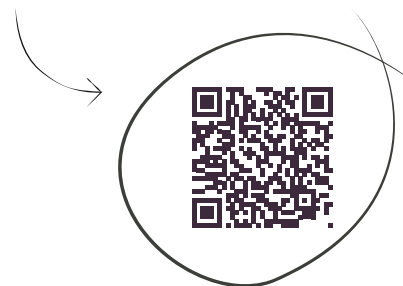


Kevin McCloud	1
Gallery	3
Eco Policy	5
Our Buildings G Range	7
G1	9
G2	13
G3	17
G4	21
G5	25
Create Your Building	29
Basebox	31
Buckinghamshire Showroom	35
Twickenham Showroom	37
What's Included in the G Range	39
Installation	41
Buy Your Garden Room	43



Watch our film & read

... about **Kevin's** experience visiting our showroom, factory and hear everything he has to say about why he is *proud* to represent Green Retreats via the **QR code**.




Discover why we're the UK's premier garden room manufacturer & installer.

"What I really find exciting about these, as opposed to anything else really in the market, is that you can understand how these are made, you can appreciate their quality and you can understand the story..."


Kevin McCloud


BAFTA Award Winning Broadcaster, Writer, Environmentalist





 Planning permission rarely required


 Built in 1-5 days

 Adds value to your home

 Fully insulated for year-round use

 Fits close to any solid obstacle

 Designed and built in the UK

 Maintenance free as standard

 Eco-friendly company



A picture is worth a thousand words.

We've had the pleasure of helping thousands of our customers create their perfect garden room (*over 17,000 customers since 2005!*)

We can let our experience speak for itself when you see our previous customer projects in our photo gallery:



Building Design: G2 Size: 4.5m x 3m Pack: Graphite



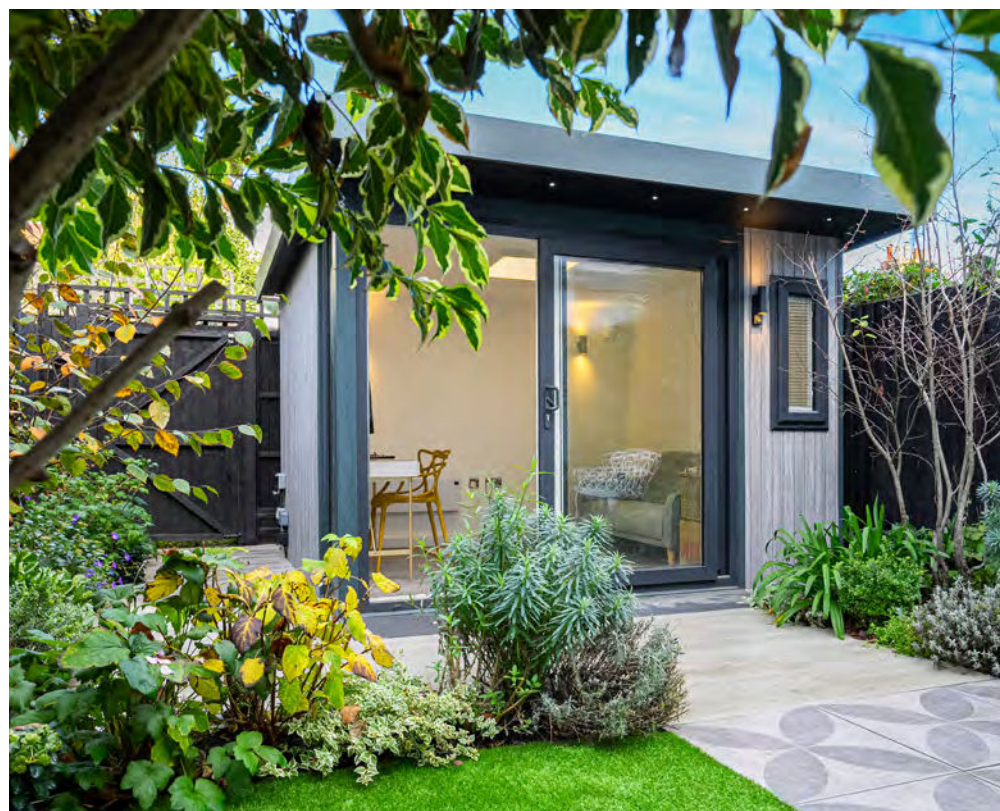
Building Design: G5 Size: 4m x 3m Pack: Black



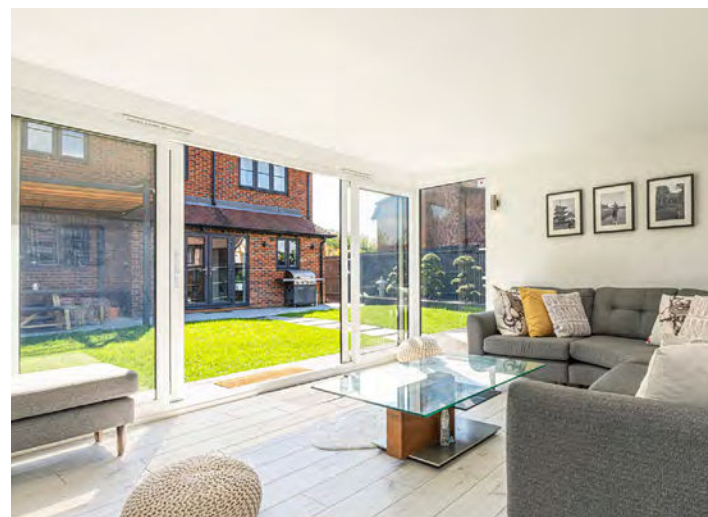
Building Design: G3 Size: 4m x 3m Pack: Natural



Building Design: G1 Size: 7.5m x 4m Pack: Graphite



Building Design: G1 Size: 3m x 2.5m Pack: Graphite



Interior view Plastered finish Size: 6m x 3.5m

See our full customer photo gallery

scan the QR code



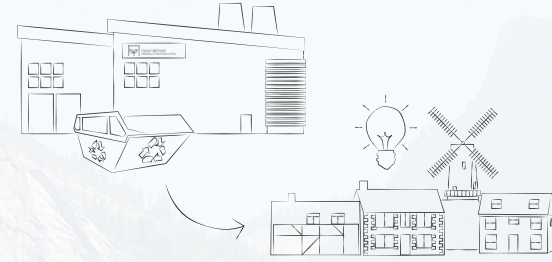
Building Design: G1 Size: 4m x 3m Pack: Graphite





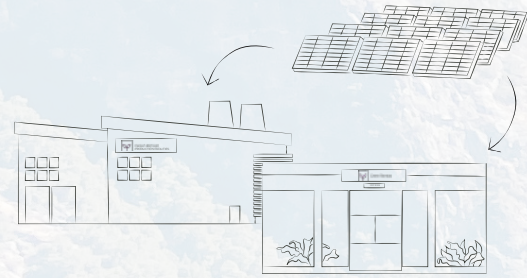
1. SUSTAINABLE MATERIALS

The many materials used to construct our garden buildings have been carefully chosen for optimal performance and superior ecological values.



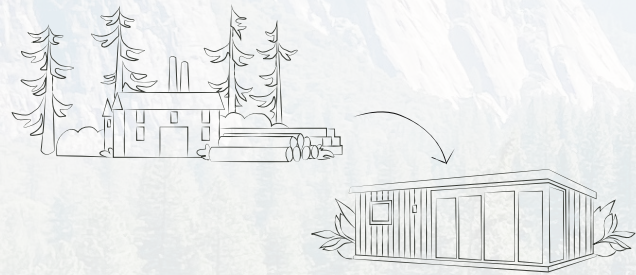
2. LANDFILL FREE

Green Retreats sends no waste to landfill. Any waste that cannot be recycled is given to our local recycling centre for incineration. This incinerator creates energy which is used as fuel to produce power for our local village power grid.



3. SOLAR POWERED

Our Buckinghamshire production facility, as well as our showroom and offices, are powered from one of the UK's largest solar panel farms.



4. 5 TREES PLANTED FOR EVERY 1 USED

We only use responsibly sourced timber from FSC certified suppliers; with 5 trees planted for every 1 used in our construction.



4. CARBON NEUTRAL

Our showrooms, offices and production facility are completely carbon neutral!

Go Green... Retreats

"What draws me to this business is the sustainability, ethics & principles on which it's founded"

Kevin McCloud



Watch our eco video





Take your pick.



G1

page 09



G2

page 13



G3

page 17



G4

page 21



G5

page 25



Basebox

page 31

"These buildings can be customised. You can alter them with partition walls, lighting, choices of windows & openings. What that does is allows you to make it yours and make it extremely personal."

Kevin McCloud



Price Guide

Refer to our Price Guide included in your brochure pack to see full prices and size configurations.





Building Design: G1 Size: 7m x 3.5m Pack: Black



G1

Traditional cabin style in a modern design with a grand hood that extends from all sides.

Cabin style design with sheltered hood feature
Available with a graphite, black or natural pack
3 board deck step



Case Study

G1

4m x 3m

Graphite Pack

Business



Read our case study

HOME BUSINESS HAIR SALON.

Hannah needed a purpose-built hair studio to create a luxury salon that would accommodate her client's needs. A space ideally where lavishness meets convenience for a relaxing pampering experience. Styling hair in her kitchen wasn't going to cut it; she needed something fresh, bold and exciting... that's when she came across Green Retreats.

The striking design of the G1 caught our customer's eye, and she envisioned greeting clients with a glass of bubbly, taking them on their hair journey all from the comfort of her garden room.

The end result.

The stylish G1 garden room helps separate work from Hannah's home life, creating a harmonious blend that allows our customer to get the best of both worlds.

It's the perfect place for her clients to feel pampered and enjoy the full experience of being in a salon one-on-one with a professional hairstylist, allowing room for complete attention to detail and a flawless customer experience.

As Hannah puts it, "I'm not using my kitchen or living room for my clients. My home feels like home, and my clients do not feel like they are interrupting our family space."



Did you know?

A garden room is a faster, simpler and more cost-effective alternative to a traditional home extension. See the price comparisons...





Building Design: G2 Size: 5m x 3m Pack: Natural

G2

13




G2

Compact and contemporary with squared edges and a shallow front frame that gives a pod-style appearance.

-
- Simple squared edges
 - Maximum internal size vs. external footprint
 - Available with a graphite, black or natural pack
 - 1 board single deck step

G2

14



Case Study

G2 7m x 4m Natural Pack Entertainment

FAMILY GAMES ROOM & CHILL OUT SPACE.

As our little ones become big ones, the need for space grows as do our families. Living rooms get nosier, and bedrooms become crammed, resulting in moody teens and moodier parents.

To combat this issue, our customer needed a solution where the family could sprawl out, an area where the children could play and adults can entertain...



Did you know?

A garden room can increase your property value by a whopping 15%!

What we did

This family required a modern solution; the answer... a stylish garden games room!

Their garden room is a spacious 7m x 4m, one of the largest size configurations we offer. This G2 garden room is a gentle giant nestled in the bottom of the garden, unintrusive and blending harmoniously with the fencing around the perimeter.

The internal space is big enough to house a large corner sofa in the lounge area and also a pool table in the gaming area. An ideal space for both relaxing and entertaining. The expansive 3.8m bifold door runs almost the entire width of the building. It can be fully opened, ideal during the sunny summer months to make the most of their indoor-outdoor space.



Read our case study scan the QR code





Building Design: G3 Size: 5m x 5m Pack: Natural

G3

17



G3

Stylish square-edge design with an extended front frame that creates a striking sheltered surround.

Square edge design

Sheltered front frame with hood, side screens and deck

Available with a graphite, black or natural pack

3 board deck step



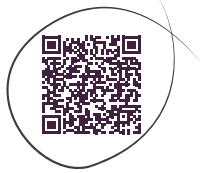
G3

18



Case Study

G3 7.5m x 4m Natural Pack Fitness



Read our case study
scan the QR code

MODERN HOME GYM.

For this professional athlete, a commercial gym wouldn't give the privacy they needed to focus on their specific fitness needs. Plus, a gym on your doorstep means more time dedicated to fitness and less time on travel – working smarter, not harder!

They needed a space specifically catered to them to be able to carry out certain exercises and store specialist equipment and machinery. For this sportsperson, a purpose-built gym was the only option. Without wanting to deal with the hassle of planning permission, they needed an alternative...

What we did

This cutting-edge G3 delivers in every way, shape and form.

The size is an impressive 7.5m x 4m extended height building, so that the customer can fully kit out their space with all the equipment they need whilst still having the freedom of movement to stretch, lunge, and jump with ease.

Designed for dynamic, high-performance training, this garden gym is tailored to facilitate peak performance. Whether it's strength training, cardio workouts, or flexibility exercises, the generous space ensures that our customer has the space they need to push their limits and achieve their fitness goals. With its combination of innovation and practicality, this G3 sets a new standard for home workout spaces.



Did you know?

Come rain or shine, you'll be able to enjoy using your garden room as they are fully insulated for year-round use.





Building Design: G4 Size: 7.5m x 4m Pack: Graphite



G4

Sharp and architectural with an angular front frame that creates a dynamic statement design.



Angled forward leaning front frame
Available with a graphite, black or natural pack
3 board deck step



Case Study

G4 4.5m x 3m Natural Pack Office

MODERN HOME OFFICE.

With hybrid working being incorporated within their business model, this company director needed a upgrade to their temporary makeshift office set-up. He craved a contemporary space where he could work to innovate, collaborate, and manage his successful business remotely.

The trouble was finding the space. With costly and timely home extensions out of the question, he needed an alternative and looked to his garden for inspiration!



What we did

The G4 is an architecturally striking building that perfectly represents the streamlined workflow of this garden office, giving our customer everything he needs to have a productive workday and providing a peaceful, private workspace to aid productivity.

This 5-second commute from his house to the garden room is one he does with a smile on his face, knowing it's going to be a good day in the office.



Read our case study scan the QR code





Building Design: G5 Size: 5m x 4m Pack: Graphite

G5

25



G5

Curved corner detail that joins a sheltered hood and enclosed side to create a distinctively different design.



Curved corner design

Available with a graphite, black or natural pack

3 board deck step



G5

26



Case Study

G5

8m x 3.5m

Black Pack

Multi-use

MULTI-FUNCTIONAL FAMILY SPACE.

Our customer had exhausted all possibilities when it came to creating more space. After having “extended our house as much as we could,” she still needed a way to make space for her growing family.

That’s when she explored garden room alternatives as a way to create a living space within the design of their newly landscaped garden. With this concept in mind, it was crucial that the choice of garden room would need to reflect the aesthetic of their home perfectly; that’s when she came across our modern garden room range.



Read our case study
scan the QR code

What we did

The G5 garden room delivers exactly on its promise of being an excellent architectural choice with it being the only curved corner in the Green Retreats range, perfectly rounding off the finishing touches to this family’s gorgeous home.

Not only does it boast a stunning design, but the versatility of the space makes it the best home extension alternative for this Green Retreats customer.

“It means that our teenage children have somewhere to go with friends and relax in the evening. We put a kitchen area/ bar with a fridge inside, too, so it’s a great place to hang out. We also use it for exercise purposes with our Wattbike and space for yoga, etc. It really is a multi-purpose and versatile room!”



Did you know?

You rarely need planning permission for a garden room! Our buildings fall within your permitted development rights meaning you can easily create the extra space you require.





Now the fun begins.



CLADDING

NATURAL

- Scandinavian Redwood
- Honey Redwood
- Cedar
- Slatted Redwood
- Slatted Honey Redwood

COMPOSITES

- Composite Oak
- Composite Cedar
- Composite Black
- Composite Grey

DECKING

- Scandinavian Redwood
- Honey Redwood
- Cedar
- Composite Black
- Composite Graphite

WINDOWS, DOORS & FLASHINGS

- Black
- Graphite

INTERIOR FLOORING

- Natural Oak Laminate
- White Oak Laminate
- Grey Oak Laminate
- Grey Carpet Tile

KEY: ● Options included in the price

Options apply only to the G Range | G1,2,3,4,5



Try our 3D design tool using the QR code

1. PICK YOUR BUILDING

GRAPHITE PACK

BLACK PACK

NATURAL PACK

2. NATURAL PACK OR GRAPHITE OR BLACK PACK

3. SELECT YOUR STANDARD OR UPGRADED DETAILS

4. VISIT OUR SHOWROOMS pages 35 & 37



What are the Natural, Graphite & Black Pack?

Any of the G Range buildings come with the option to have a natural, graphite or black pack included in the price. These packs change the styling and colours of:

- The front frame flashings of the building
- The underhood and enclosed side inserts
- The decking

What else is included in the price & what are the options & upgrades? Visit page 39



Building Design: Basebox Size: 4.8m x 2.4m Paint: Black



Basebox

Basebox is a pioneering design that is completely different to the core Green Retreats G Range.

Designed using value-engineered material to create our most cost-effective building to date.

Built using completely different materials and techniques
Installed with a primed composite cladding that needs painting within 6 months
Painting options available; including sage, black and grey
10 Size options to choose from

SELF-BUILD OPTIONS AVAILABLE

see website for details



Case Study

Basebox 3.6m x 2.4m Lounge

BASEBOX.

Our customer was looking for a budget-friendly, space-saving fix that could give them some extra office room while still being flexible for other uses outside of office hours.

When this customer was shopping around for a garden room, they were met with budget challenges that meant they were struggling to find a space to meet their needs. That's until they found Basebox by Green Retreats.




Did you know?
A garden room is the perfect way to create a private paradise, allowing you to escape the hustle and bustle of everyday life and escape with nature instead – a true green retreat!

What does our customer like most about **their garden room?**

“It’s a space where I can take time for myself. The great thing about having a garden room is that it helped me manage my workload, hobbies and home life in a healthy way. As someone who works from home, it’s hard to switch off sometimes, and my garden room certainly helps me with that.”

This design from Green Retreats is our most cost-effective garden room design, built using value-engineered materials that provide quality at affordable pricing.

 **Read our case study**
 scan the QR code





Visit Us



The Flagship Showroom

Westcott, Buckinghamshire.

FIND US

The Showroom.

Green Retreats Showroom
Westcott Venture Park,
Street 2, Avenue A
HP18 0XB

Opening Hours.

Monday - Friday: 9am - 5pm
Saturday: 9am - 4pm
Sunday: 10am - 4pm



Showroom Be our guest.

Our flagship showroom is the UK's largest garden room showroom! With 19 garden room buildings on display, you can view our full range of styles in various sizes, plus all our optional extras and upgrades.

Situated in the beautiful Buckinghamshire countryside, come and experience our unique showroom no matter what the weather with a mix of indoor and outdoor environments.

Find us between the famous Bicester Village Shopping Outlet and the National Trust's Waddesdon Manor - both a stone's throw from our location!



All Weather Showroom
Indoor & Outdoor



Free Parking &
EV Charging



Free Tea
& Coffee



19 Display
Buildings



Dog Friendly





Visit Us



The Hub Showroom

Twickenham, London.

FIND US

The Showroom.

Green Retreats Showroom
15 York St, Twickenham,
TW1 3JZ

Opening Hours.

Monday - Sunday: 9am - 5pm

Nearby Car Parks.

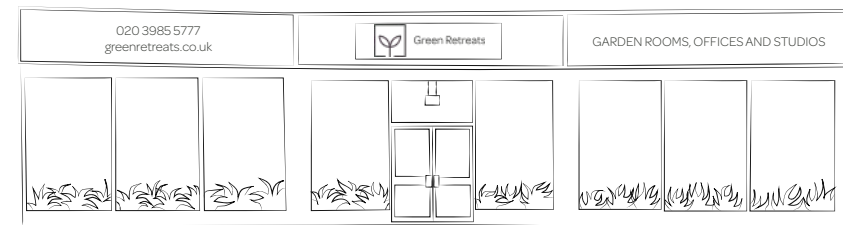
Arragon Road (TW1 3ND) - FREE on Sundays!
The Embankment (TW1 3DU)
Holly Road (TW1 4HF)

Showroom Make a **day** of it.

Our London showroom hub has been created to provide our London customers with the opportunity to experience our products first-hand.

Based in Twickenham, our showroom for those local to London includes not only our most popular products, but also a unique virtual reality experience that allows customers to create their own garden building.

Watch our showroom video.



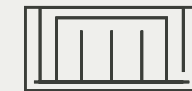
Indoor Showroom



Virtual Reality



Tea & Coffee



3 Garden Buildings



Dog Friendly





G Range | G1,2,3,4,5

What's included in the price:

- Full professional installation
- Base/foundations
- 2.3m uPVC French or sliding door
- Opening lozenge window
- Maintenance-free cladding
- Premium insulation
- Radiator heating
- Internal electrics
- Internal plug sockets
- Internal lighting
- External light
- Oak laminate flooring
- Soft-sheen white interior
- High-security locks
- VAT
- Delivery within 100 miles of our factory - postcode HP18 0XB

Make it yours with optional upgrades

To really personalise your building we offer a range of optional upgrades. Our most popular options include:

- Air-conditioning
- Aluminium bifold doors
- Partition walls
- Plastering & painting
- ...and much more

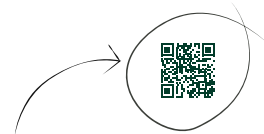
Thinking inside the box.

The listed price of your chosen G Range garden room is fully inclusive of everything you need to get started.

We make sure there are no hidden costs for the things you would really need to make your garden room comfortable, cosy, secure and stylish.

That's why we include all of the basics and essentials as standard.

Just add furniture, and you're good to go!



Read more details on what's included and your options & upgrades available by scanning the QR code.

Did you know?

The materials we use to make our garden rooms are the same that you'd find in new-build housing. This makes our buildings feel like a room in your house would, just detached!





BISH BASH BOSH.



We do the **full works.**

Designing your garden room is an exciting feeling, and no doubt your first question is **“how long will a garden room installation take?”** We aim to make the process as stress-free and as simple as possible for our customers, whilst ensuring you receive a high-quality garden room that meets all your needs and expectations.

At Green Retreats, we pride ourselves on the ability to design a garden room perfectly tailored to you. Once you have created your final design with our team, we will give a full breakdown of the timescales for the size of building you’ve chosen, as well as the timings for any optional extras that you may have added.

We promise to be quick and discreet when at your site, with the building generally being fully watertight by the end of the first day!



“How long does it take for my garden room to be built?”





1



Here are a few ways you can **start** your garden room journey:

Showroom

Visit one of our showrooms where you can see, touch and experience our garden rooms first hand! We have a great in-house team who are on hand to answer any questions you might have.

or

Design Consultation

If you're happy with the research you've made online without visiting our showrooms and are keen to jump straight into an at home design consultation. At this appointment we will go through all the important design elements and measurements for your project. The design consultation is completely free with no obligation.

or

Reserve an Installation Date

If you know exactly when you'd like your garden building installed, or if you're in a hurry and want our next available installation slot, then you can reserve your installation date first and sort out the details after!

All we ask for is a deposit to secure the date which is fully refundable until 6 weeks before, so there's no pressure if you change your mind or would like to delay.



2



Finalise your perfect design:

The Next Step:

Until 6 weeks before your installation date, you're able to make as many changes and amendments you'd like before the final design is signed off and sent to our factory to be crafted!

Your dedicated Customer Care Rep will be in touch to confirm any final details, as well as providing you with an electrical plan confirming the placement of lights, switches, sockets and your consumer unit.

After this time, no further changes to your garden room design or installation date can be made, so we'll make sure you're completely happy and ready for your installation date at this point.

🌱

Did you know?

Until 6 weeks before your installation date you can still change your design and even move your installation date or cancel completely for a full refund of your holding deposit.

3



Installation process:

1. Prep

During your design consultation, our surveyor will have discussed with you any grounds work or preparation needed before we begin installing the foundations of your building. Not all customers will need to do this, it will just depend on the land you are building on, so if you are unsure at any point, contact your customer care rep who will be more than happy to answer any questions or clarify any uncertainties... no question is a silly question!

2. Base/Foundations

We usually arrive within 2 weeks before your installation date to install the foundations & base of your garden room to ensure the base has time to set. This date will be discussed with you and booked in with our team.

3. Delivery & Installation Day!

The installation of your garden room typically takes between 2-5 days with the main structure being weather tight by the end of the first day.

Our own highly trained teams that will be constructing your building from start to finish, with no step outsourced to external contractors so we can keep full quality control at all times.

If you have opted for plastering and painting options this can make the completion date for your building several weeks later due to drying times.

Buy your garden room.



4



MOVE-IN DAY!

The big reveal awaits...

It's the moment you've been waiting for and we are just as excited as you are!

Once your garden room is completed, your Customer Care rep will continue to support you by answering any further questions, requests or (unlikely) issues. You can trust our service is to the highest standard and the quality you would expect when investing into our buildings at Green Retreats.

Ensuring you are **100% satisfied** and happy with your journey with us is our top priority!

Don't forget to enter our **Garden Room of the Month Competition** and be in for a chance to WIN **£100 Amazon Voucher!**



Best garden room
30 July 2023

Green Retreats fully met and surpassed our expectations, from initial to final design, then installation and handover, everything to the day we'd agreed. It's heartening to see a business deliver customer care and product quality to the very highest standard, and such a lovely building which we enjoy using. A real plus was the full design and installation service, we didn't need to arrange any other service, unlike others we considered. I cannot recommend GR highly enough.



"Each one of these buildings is crafted, thought about, cared for and as a customer, that approach starts with the first telephone call and ends with handing over the keys - and actually, it's beyond that too"

Kevin McCloud

The Flagship Showroom Westcott, Buckinghamshire.

FIND US

Opening Hours.

Monday - Friday: 9am - 5pm
Saturday: 9am - 4pm
Sunday: 10am - 4pm

The Showroom.

Green Retreats Showroom
Westcott Venture Park,
Street 2, Avenue A
HP18 0XB



The Hub Showroom

Twickenham, London.

FIND US

The Showroom.

Green Retreats Showroom
15 York St, Twickenham,
TW1 3JZ

Opening Hours.

Monday - Sunday: 9am - 5pm

Nearby Car Parks.

A | Arragon Road (TW13ND) - FREE on Sundays!
B | The Embankment (TW13DU)
C | Holly Road (TW14HF)



Green Retreats

☎ 01296 325777

✉ hello@greenretreats.co.uk

🖱 greenretreats.co.uk

